

SmartClass+

DVI

Computer Lab Management System

Take Control of Your Classroom!

SmartClass+ is a multimedia control system that equips instructors with the tools they need to manage student activities in a computer lab. SmartClass+ empowers teachers to orchestrate:

- Teacher presentations
- Model student presentations
- Monitoring student screens
- Remote control of student workstations

Unlike software-based switching systems that restrict resolution, limit refresh rates, and compress color palettes, SmartClass+ uses a dedicated DVI hardware-based switching platform that delivers high-definition, uncompromising screen quality.

Rich-Media Application Support

The new DVI (Digital Visual Interface) version of SmartClass+ has been developed specifically for computer labs that support the teaching of rich-media subjects requiring high-definition graphics and/or smooth video. Application examples include:

- Computer Aided Design (CAD)
- Solid Modeling
- Architectural Design
- Cartography
- Geographic Information Systems (GIS)
- Media Arts
- Image Processing



Powerful & Practical Teaching Functions

The Benefits of Screen Sharing

Imagine that you have asked your students to work on an assignment. Are they working diligently, are they totally lost, or are they playing computer games? With SmartClass+, there is no guesswork. At the click of a button, you can monitor students and instantly provide help when and where needed.

All of the system's major screen-sharing functions – from reset to remote control - are highlighted to the right.

Optional Audio Intercom

SmartClass+ DVI can be equipped with an optional audio intercom module that enables teachers to discreetly monitor student audio, to speak with students, and to organize students into pairs or small groups for collaborative assignments.

Teachers and students are equipped with well-padded rugged headsets with integral boom microphones. Students are also provided with individual Call buttons that enable them to discreetly ask for help from the instructor.

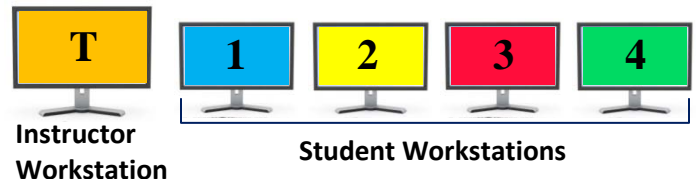


Single and Dual Screen Support

The basic SmartClass+ DVI system supports workstations having a single screen, but for applications like CAD, dual-screen workstations are also supported – with concurrent sharing of both screens.



Reset: By default or when the teacher selects *Reset*, all screens show the output of their local workstations.



Blank Screens: Blank student screens and lock all keyboards and mice to focus student attention on the instructor.



Broadcast: Send the instructor's screen (and audio) to the class for teacher presentations.



Subgroup: For remedial training, work with only those students requiring extra help.



Model Student: Send any student's screen (and audio) to the class for student presentations.



Monitor/Autoscan: Monitor individual students or scan the entire class to ensure students stay on topic and receive any appropriate help.



Remote Control: Take remote control of any monitored station to demonstrate an idea or a solution.



Flexible and Easy to Use

Control Panel Options

Robotel provides several mechanical and graphical user interface (GUI) options. Our newest SmartClass+ console, (shown at the bottom of this page), is called the *System Dashboard*.

One of our mechanical controllers, the SC2500 CE, is shown to the right.

Additionally, system integrators are able to remotely control the SmartClass+ system from 3rd party interfaces, (such as those manufactured by AMX and Crestron).



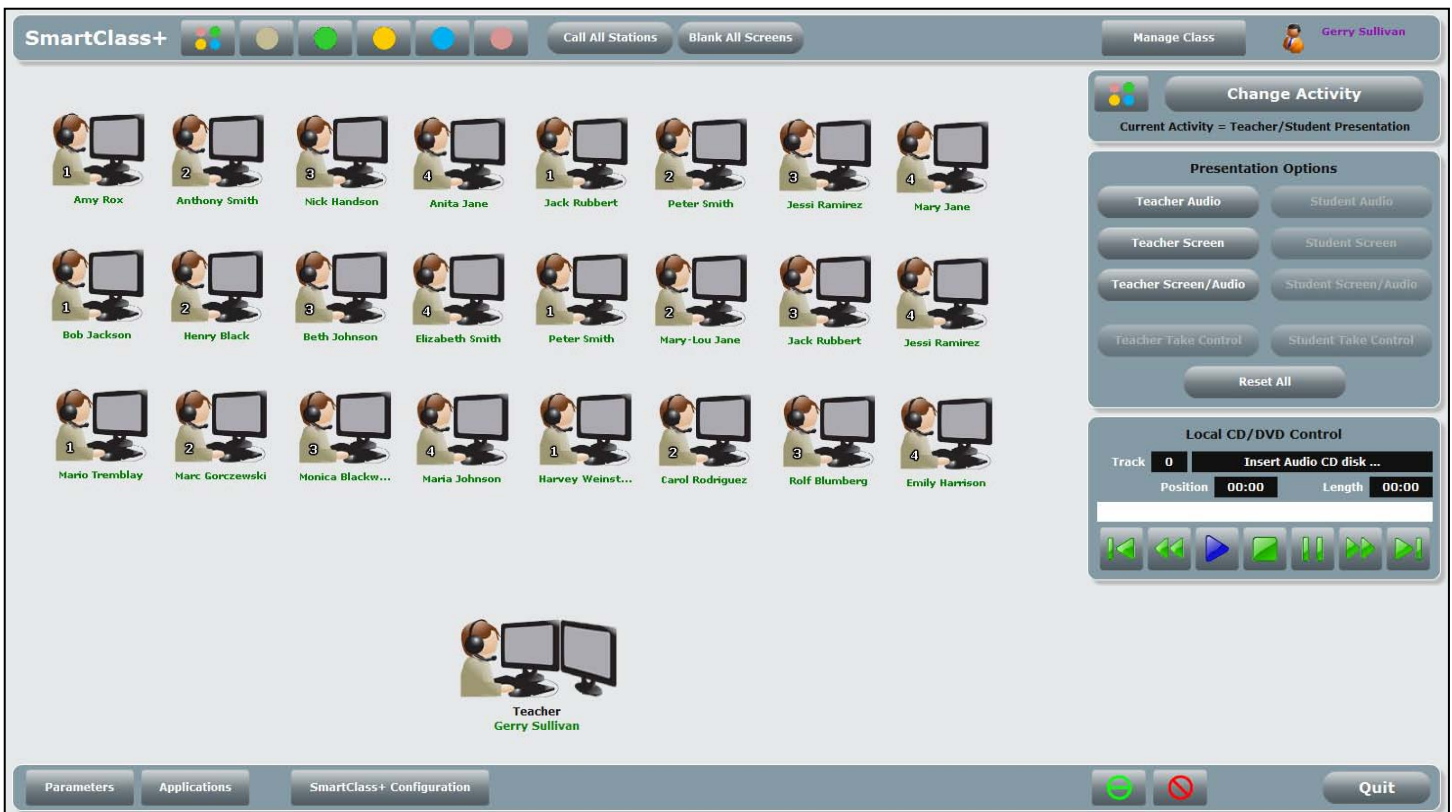
Intuitive System Dashboard

The new SmartClass+ *System Dashboard* combines pedagogical sophistication with operational simplicity. Dashboard navigation is structured to ensure that teachers can quickly master the system through:

- Logical control organization
- Clear visual feedback
- Step-by-step guidance
- Individual instructor preferences

DVI-D, DisplayPort, & HDMI Support

The single-link version of SmartClass+ DVI supports resolutions of up to 1920 x 1200 pixels on all displays. DVI-I connectors directly support DVI-D devices, and DisplayPort and HDMI devices are supported by using simple passive adapter cables.



SmartClass+ DVI

Technology Overview

Excellent video quality

- Single Link DVI-D video connection
- USB keyboard/mouse connections
- Video resolution up to 1920 x 1200 @ 60 Hz
- Adapters for DisplayPort and HDMI

Platform independent

- Transparent to all operating systems
- Works with Windows, MAC-OS, & Linux
- Transparent to all application software
- Transparent to most computer types

No Network Loading

- Dedicated cabling offloads all high bandwidth audio/visual traffic from the data network

Simple Installation & Maintenance

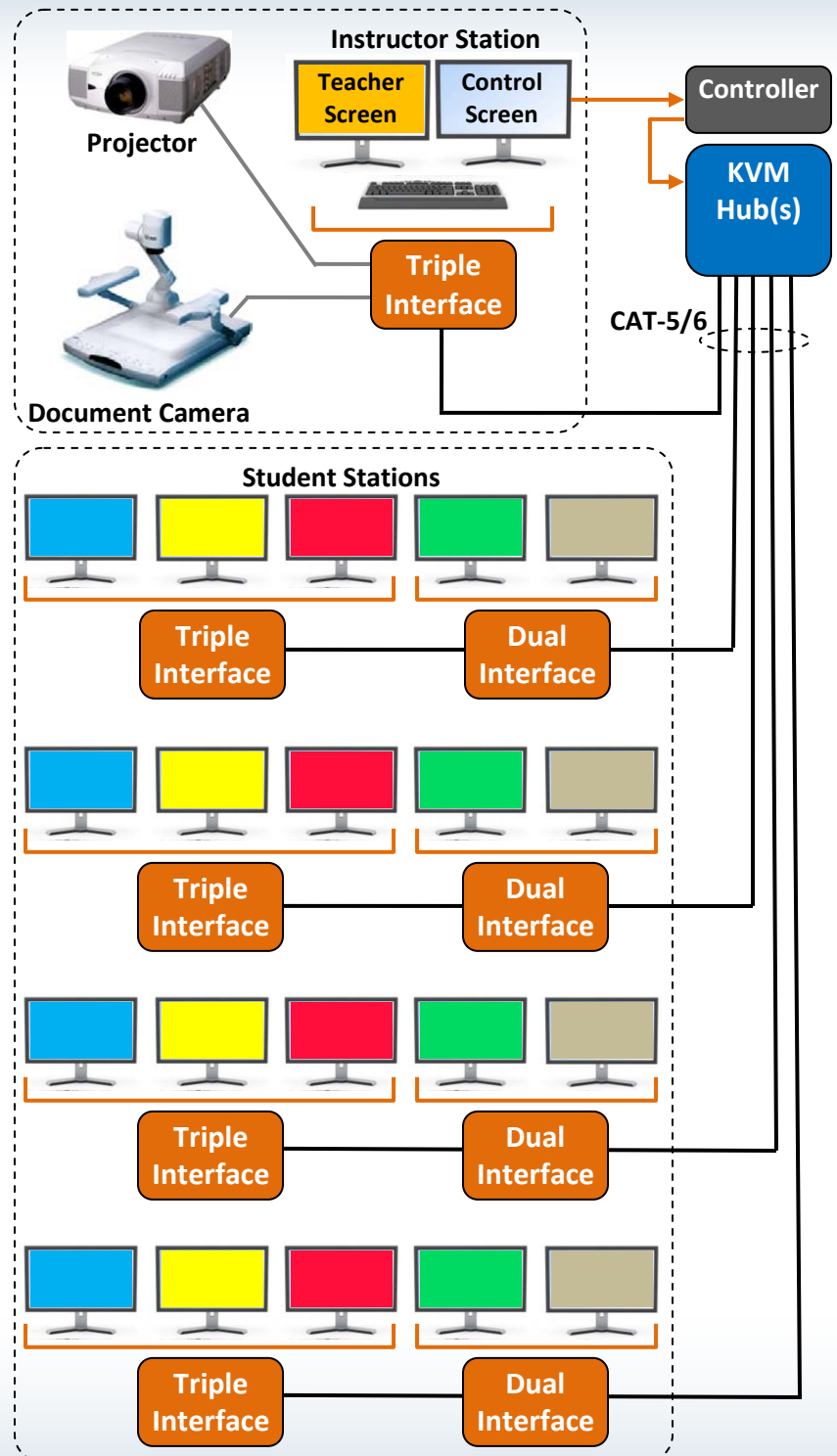
- Star topology with centralized switching hubs
- Stackable 3-port KVM Hubs
- CAT-5/6 cabling (1x F/UTP, 2x U/UTP)
- Up to 75-foot cables between hub and interface
- Workstation clusters of 2 to 5 stations
- Compatible with network wiring & conduit
- Easy to move or reconfigure workstations

Flexible Control Interface Options

- Robotel graphical user interface:
 - SmartClass+ Dashboard
- Robotel mechanical user interfaces:
 - SC2500 CE
 - SC2500 C
 - SC2500 CL
- 3rd party graphical user interfaces:
 - AMX, Crestron, etc.

Optional Audio Intercom Support

- High-fidelity 20 Hz – 20,000 Hz
- Includes student call buttons
- 32-port Audio Matrix (stackable)
- Rugged-duty padded stereo headsets



3185 rue Delaunay Laval (Québec) CANADA H7L 5A4
Toll Free (North America): (800) 680-1448
Telephone: +1 (450) 680-1448
Facsimile: +1 (450) 680-1928
Email: sales@robotel.com