

# SMARTCLASS

## DVI

The Ultimate Computer Lab  
Management System

- DVI-D Screen Switching
- USB Keyboard/Mouse Sharing
- CAT-5 Structured Cabling
- PC and MAC Compatible



# SMARTCLASS DVI

## Take control of your rich-media computer lab!

*Unlike software-based switching solutions that restrict resolution, limit refresh rates, and compress color palettes, SmartClass DVI uses a dedicated hardware-based switching infrastructure that delivers high-definition screen quality.*

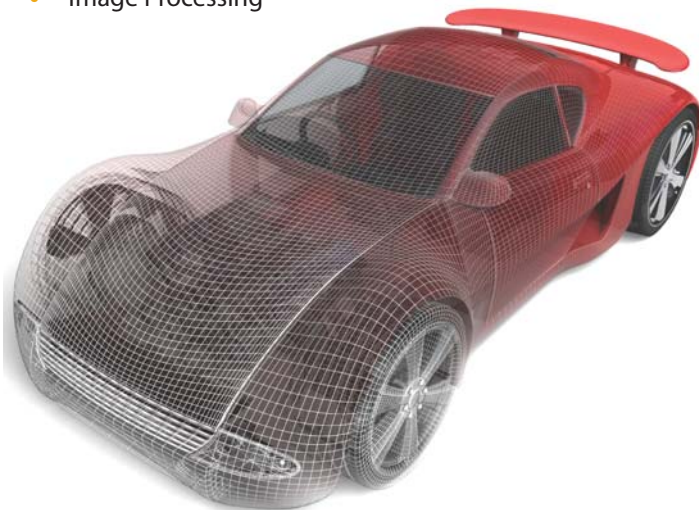
SmartClass DVI allows teachers to make visual presentations, to have model students make visual presentations, and to remotely view and control student screens without compromising image quality. All major functions are shown on the opposite page.

### Rich-Media Application Support

The new DVI (Digital Video Interface) version of SmartClass Plug & Play has been developed specifically for computer labs that support the teaching of rich-media subjects requiring high-definition graphics and video.

Application examples include:

- Computer Aided Design
- Solid Modeling
- Architecture
- Cartography
- Media Arts
- Image Processing



### DVI-D and HDMI Support

The single-link version of SmartClass DVI uncompromisingly supports resolutions of up to 1920 x 1200 pixels on all workstations. SmartClass DVI is also compatible with HDMI displays and AV sources using adapter cables.



### Single and Dual Screen Support

The basic SmartClass DVI system supports workstations having a single screen. The basic system can be upgraded to support dual-screen workstations with concurrent sharing of both screens within the lab.



### Optional Audio Intercom

SmartClass DVI can be equipped with an optional audio intercom layer. Users have rugged well-padded headsets with integral boom microphones. Students are also provided with individual Call buttons that enable them to discreetly contact the teacher to request help.

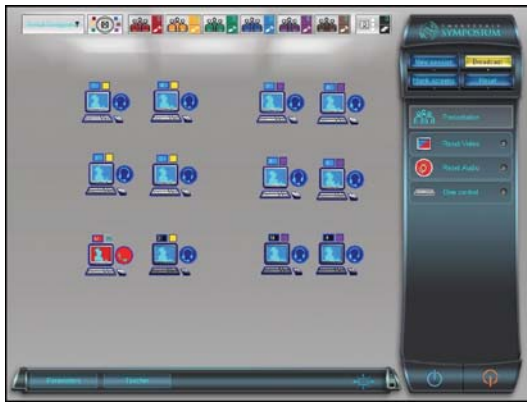
The intercom system enables teachers to discreetly monitor student audio, to speak with students, and to organize students into pairs or small groups for collaborative assignments.



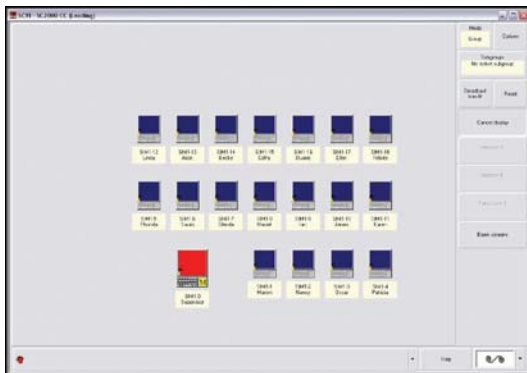
# SMARTCLASS DVI

## Teacher-Friendly Control Interface

Robotel provides several mechanical and graphical user interface (GUI) options.



Symposium Graphical User Interface (GUI)



SCVI Graphical User Interface (GUI)



SC2500 CE Mechanical Control Panel

Additionally, system integrators are able to remotely control the SmartClass system from 3rd party interfaces, (such as those manufactured by AMX and Crestron).

## Major System Functions

Instructor Workstation



Student Workstations

**Blank Screens:** Blank student screens and lock all keyboards and mice to focus attention on the instructor.



**Broadcast:** Send the instructor's screen and audio to the class for teacher presentations.



**Subgroup:** For remedial training, work with only those students requiring extra help.



**Model Student:** Send any student's screen and audio to the class for student presentations.



**Monitor/Autoscan:** Monitor individual students or scan the entire class to ensure students stay on topic.



**Remote Control:** Take remote control of any monitored station to demonstrate an idea or a solution.



# SMARTCLASS DVI

*The leading Computer Classroom Management system now comes with DVI screen sharing support and USB keyboard/mouse sharing support!*

## Excellent video quality

- Single Link DVI-D
- Video resolution up to 1920 x 1200 @ 60 Hz

## Platform independent external hardware

- Transparent to all operating systems
- Transparent to all application software
- Transparent to most computer types

## No network loading

- Dedicated cabling offloads all high bandwidth audio/visual traffic from the data network.

## Simple installation and maintenance

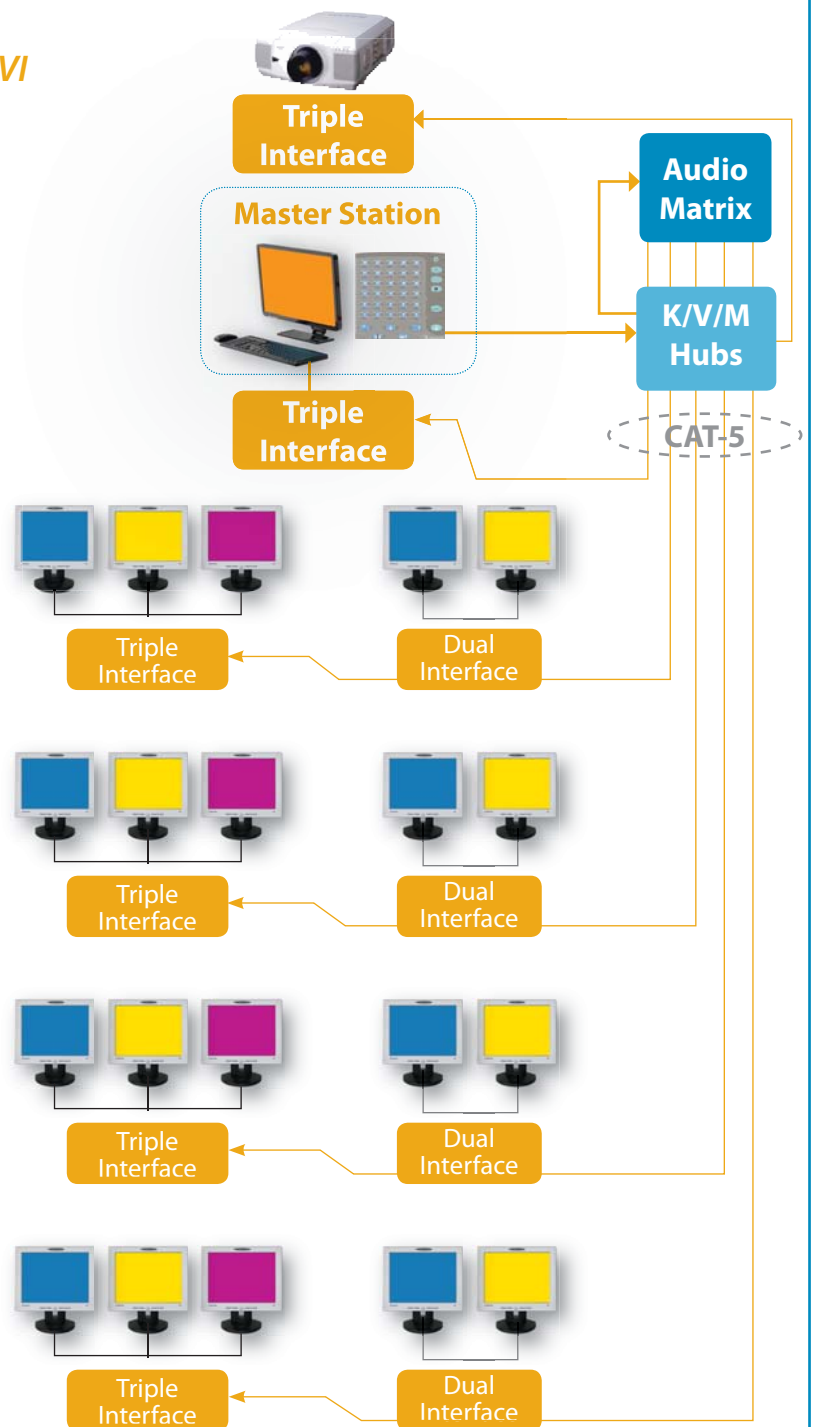
- Star topology with centralized switching hubs
- Stackable 3-port KVM Hubs
- CAT-5e KVM cabling (2x UTP, 1x SUTP)
- Up to 75-foot cables between hub and interface
- Compatible with network wiring and conduit
- Easy to move or reconfigure workstations

## Flexible Control Interface Support

- Robotel Mechanical User Interfaces:
  - SC2500 CE
  - SC2500 C
  - SC2500 CL
- Robotel Graphical User Interfaces:
  - SCVI (SmartClass Visual Interface)
  - Symposium MM & LL (with audio matrix option)
- 3rd Party Graphical User Interfaces:
  - AMX
  - Crestron

## Optional Audio Intercom Support

- High-fidelity 20 Hz – 20,000 Hz
- Includes student Call buttons
- 32-port Audio Matrix (stackable)
- Rugged-duty padded stereo headsets
- Requires Symposium graphical user interface control software



3185, rue Delaunay  
Laval (Québec)  
CANADA H7L 5A4

Toll Free (North America) (800) 680-1448  
Telephone +1 (450) 680-1448  
Facsimile +1 (450) 680-1928  
Email sales@robotel.com