

SMARTCLASS VLC

Virtual Learning Center
Support System

- Up to 4 Support Positions
- VGA Screen Switching
- Keyboard/Mouse Sharing
- CAT-5 Structured Cabling



SMARTCLASS VLC

Learning Center support system keeps students motivated to perform!

SmartClass VLC, (Virtual Learning Center), is a support/management system that enables support personnel to help students who are working at their own pace in learning centers or libraries.

Powerful Support Functions

- **Four support position** - Up to 4 separate support positions can be staffed with personnel having a breadth of subject matter expertise.
- **Open or grouped support** - Staff are able to share support for all students, or assign students to individual support groups according to subject matter commonality
- **Student Call buttons** - Students are equipped with an under-desk module having 4 call buttons – enabling them to contact the support person of their choice.
- **Student monitoring** - Support personnel are able to selectively monitor the screen and audio of any student on a proactive basis or in response to a student call. Call queuing priority is clearly identified.
- **Two-way dialog** - Staff are able to open a two-way dialog with any student they are monitoring.
- **Voice Logger** - Support personnel are able to selectively record any of their discussions with students in a permanent log.
- **Remote Control** - Support staff are able to take remote control of a student station to resolve computer problems, or demonstrate topic-related solutions.



Dual-screen support position (one of four)

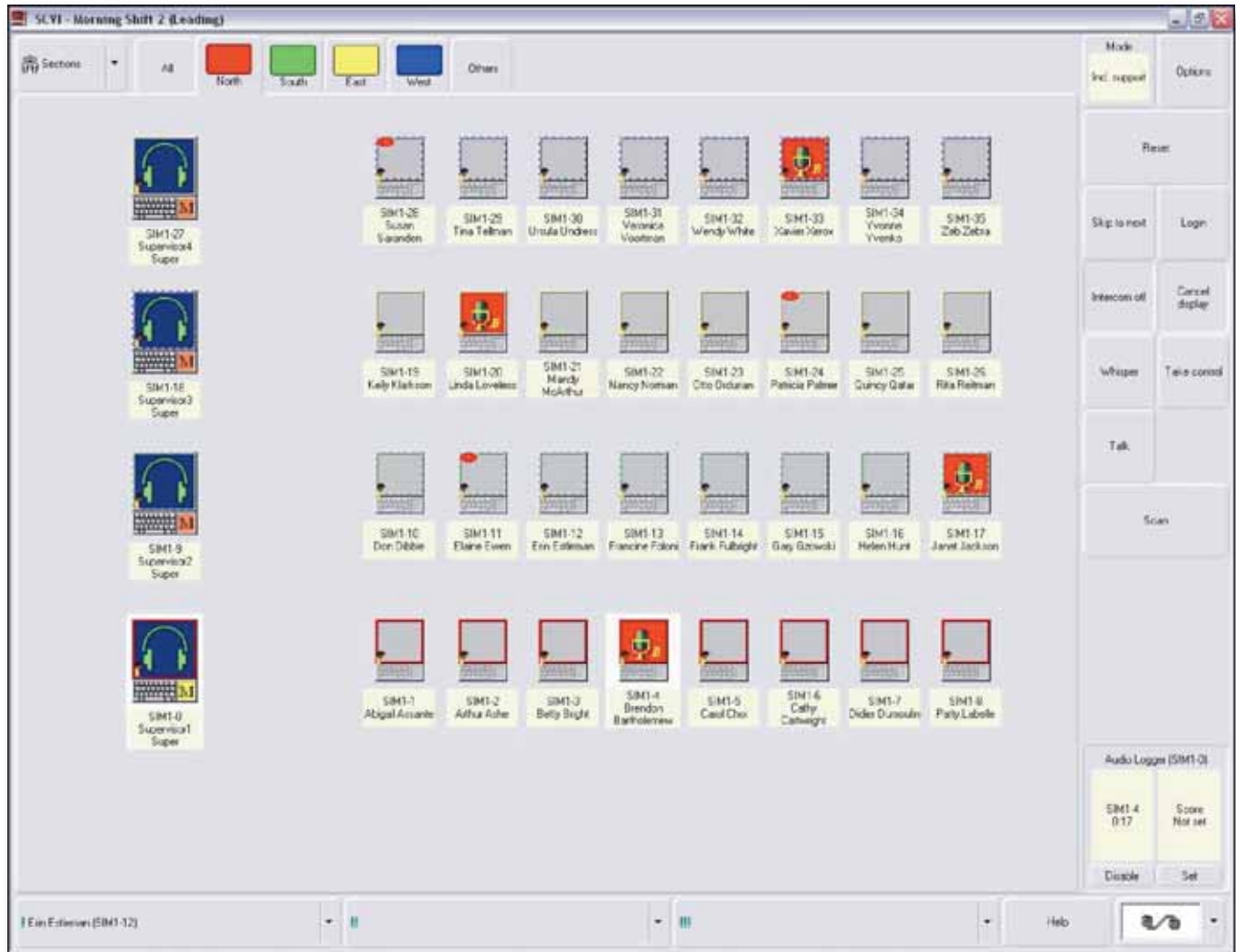


Student positions (up to ninety-two)

Student call buttons (local volume control plus 4 call buttons)



SMARTCLASS VLC



Support staff graphical control console (shown with separate groups)

Virtual Learning Center

SmartClass VLC is deemed to be a virtual learning center management system, because individual support and student positions need not be in the same room.

The system allows for connection distances of up to 300 feet between the central switching equipment and any workstation, and all connections are made with standard lightweight CAT-5e network-style cabling.

SmartClass VLC has been recently deployed in a massive 64-student university dentistry lab, where each student position includes a full dental surgery suite and a local camera.

Simple Graphical Support Console

Each support position is configured as a dual-screen workstation with a viewing screen and a control screen. The graphical control screen, (shown above), models the actual physical layout of the learning center with separate icons for each station.

Staff members have the option of sharing support responsibility for all students or partitioning the students according to common areas of interest.

All controls are laid out in a clear fashion, with accent colors carefully chosen to highlight system status. The console is easy to learn and to operate.

SMARTCLASS VLC

SC3000 System Block Diagram

SmartClass VLC is a Virtual Learning Center solution that permits support personnel to communicate with students and remotely view student screens!

Up to 4 Support Positions

- Shared support for all students
- Can have diverse subject matter experts
- Students able to call any supervisor

Excellent video quality

- Video resolution up to 1600 x 1200 @ 85 Hz

Keyboard/Mouse remote control

- PS/2 keyboard/mouse support

Platform independent external hardware

- Transparent to all operating systems
- Transparent to all application software
- Transparent to most computer types

No network loading

- Dedicated cabling offloads all high bandwidth audio/visual traffic from the data network.

Simple installation and maintenance

- Star topology with centralized switching hubs
- Stackable 16-port KVM Hubs (up to 96 ports)
- CAT-5e KVM cabling (2x UTP)
- Up to 300-foot cables
- Compatible with network wiring and conduit
- Easy to move or reconfigure workstations

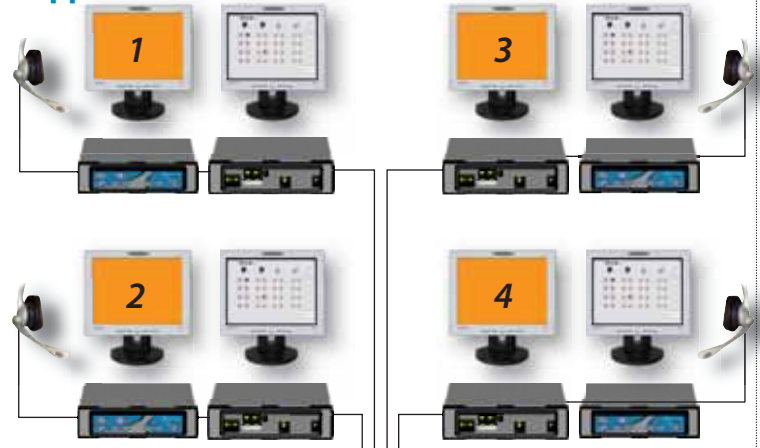
Simple Graphical User Interface

- SCVI (SmartClass Visual Interface) allows up to 4 supervisory personnel (teachers or teachers' aides) to support all students.

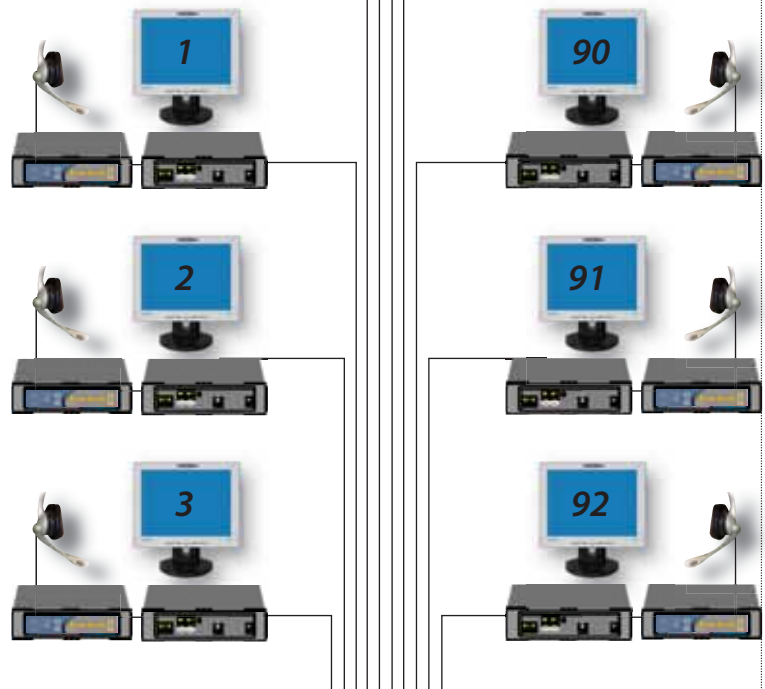
Audio Intercom Support

- Two-way audio support
- One-to-one, one-to-some, and one-to-all announcements.
- Includes student Call buttons (4 buttons for independent access to support staff)
- Rugged-duty padded stereo headsets

Support Positions



Student Positions



Central Switching Equipment



3185, rue Delaunay
Laval (Québec)
CANADA H7L 5A4

Toll Free (North America) (800) 680-1448
Telephone +1 (450) 680-1448
Facsimile +1 (450) 680-1928
Email sales@robotel.com